

CERTIFICATE OF LOCATION OF GOVERNMENT CORNER

NE Corner of Section 18, Township 108N, Range 40W, 5TH P.M.

STATE OF MINNESOTA, County of MURRAY

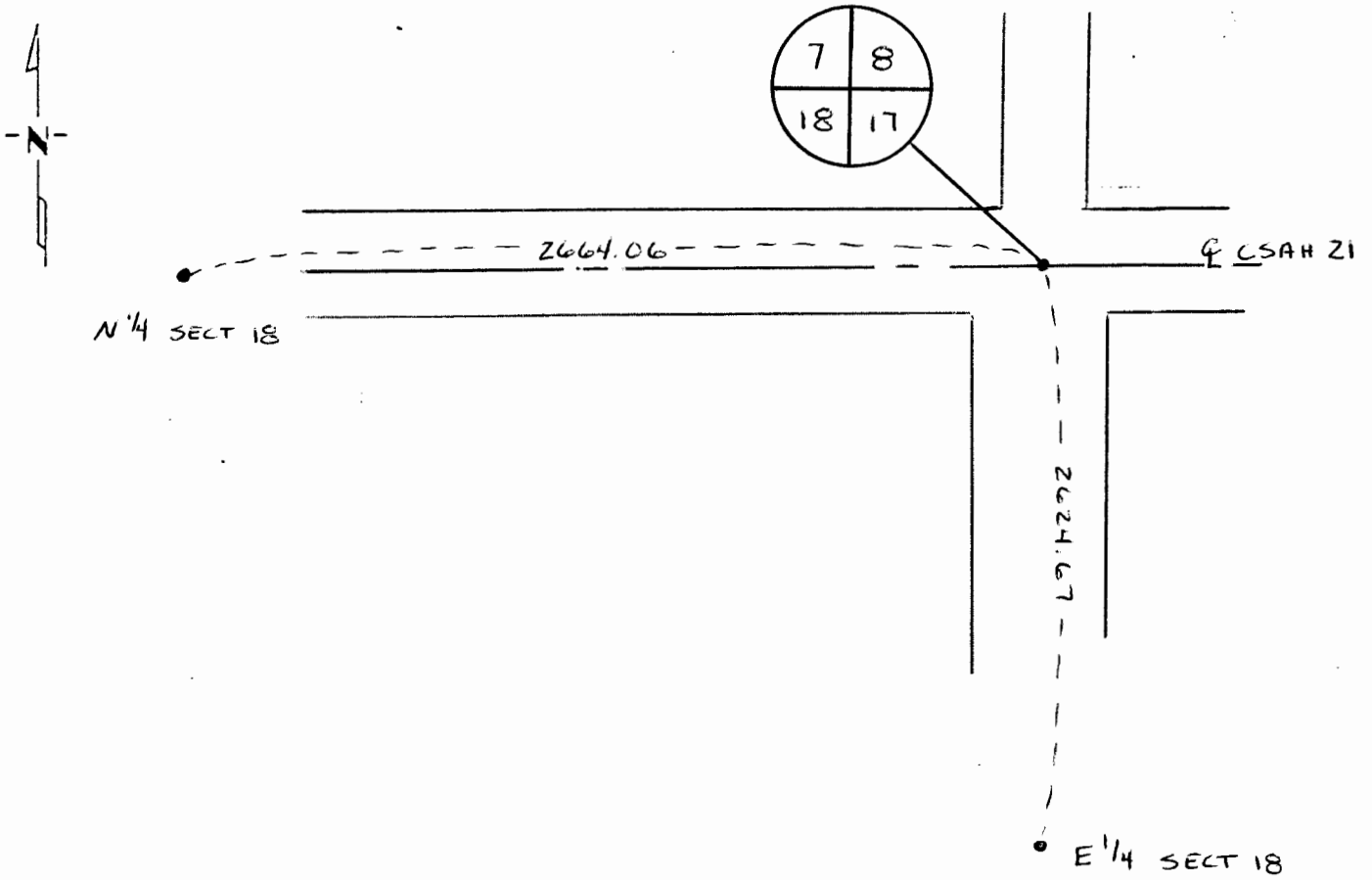
At the corner location shown on the sketch:

On 10/24/91 found a NAIL AT SURFACE
DATE

left monument as found, lowered monument, removed monument (explain)

On _____ placed a _____
DATE

SKETCH OF REFERENCE TIES



AG-LAND ENGINEERING RUTHTON, MN

Statement of evidence relative to this corner location is on back of page.

I hereby certify that this document and the data contained herein was prepared by me or under my direct supervision.

[Signature] 11-3-91
SIGNATURE DATE

Registration No. 6700

Land Surveyor, Professional Engineer

County Surveyor, County Engineer

OFFICE OF THE COUNTY RECORDER

County of MURRAY

I hereby certify that this document was filed in the Co. Recorders office at _____ .M. on the _____ day of _____ AD., 19__

County Recorder [Signature]

By NOV 7 1991, Deputy

DOCUMENT NO. _____